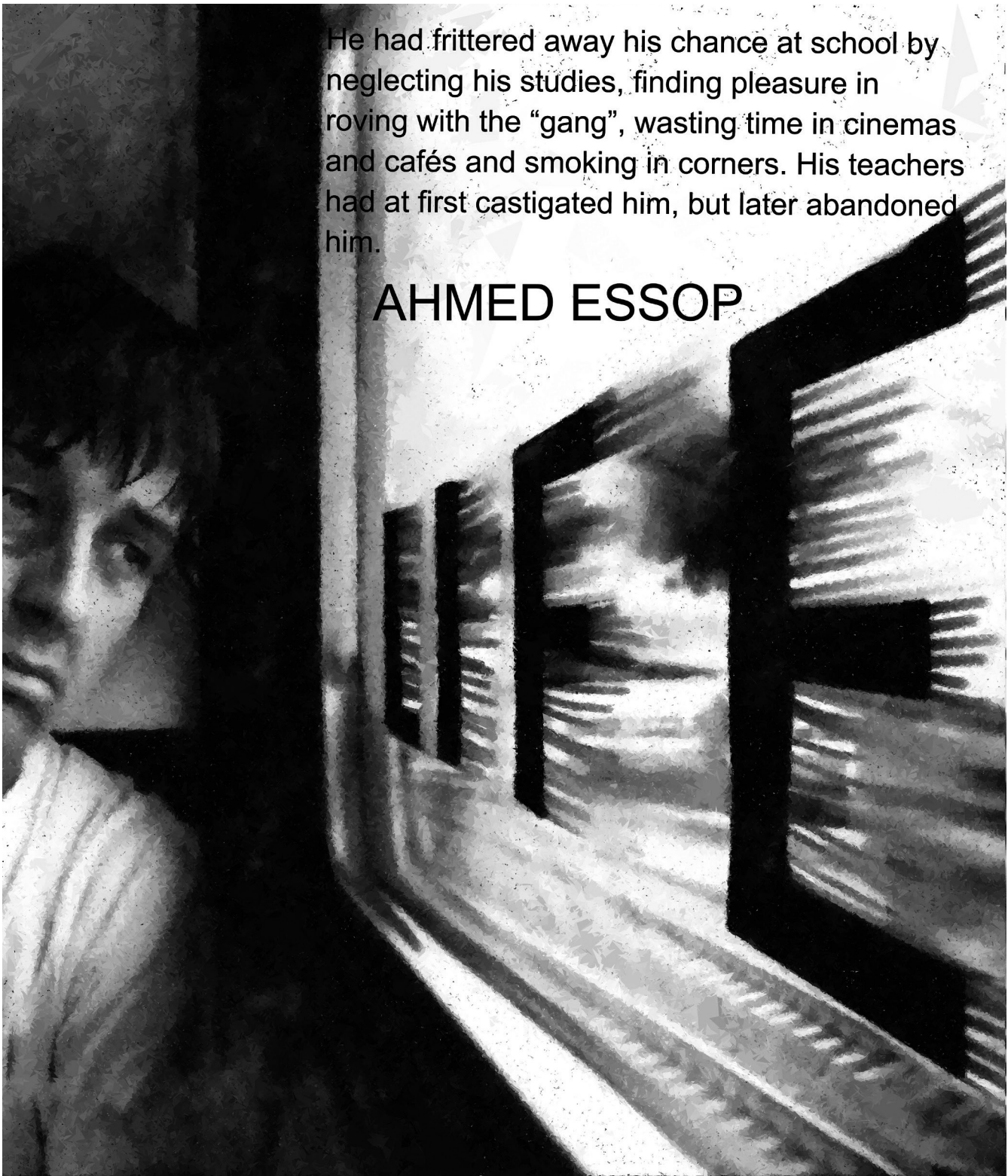


**ENGLISH  
FIRST  
ADDITIONAL  
LANGUAGE**

**Grade 11**

**Literature  
Module:  
Short  
Stories**

**RESOURCE PACK**



He had frittered away his chance at school by neglecting his studies, finding pleasure in roving with the “gang”, wasting time in cinemas and cafés and smoking in corners. His teachers had at first castigated him, but later abandoned him.

AHMED ESSOP

**GEMELLI**

**Krishna**

**Si!**  
**Va**

**Segregation**

---

**Effects of  
Inequality**

**oppression**

**privileges**

# Appartheid

---

# advantages

**disadvantages**

**Johannesburg**

**Lenasia**

---

**Massted**

**Potentia**



# Parents livings througgh their Children

---

# Resource 1



Naelys/Shutterstock

During Apartheid, people of colour and white people were segregated (separated). White people were given privileges and power while people of colour were oppressed by the white ruling government. 'Gemini' is set during this period of time in South African history. 'Gemini' describes the racial segregation in South Africa during that time. It explores the advantages and privileges from which white people benefited, and describes the hardships that people of colour experienced. During the Apartheid regime, white people had different areas for living, different schools/ education, different jobs, and different powers and privileges to people of colour. People of colour were not permitted to use the same facilities as white people (e.g. toilets, public transport, entrances to buildings). While people of colour lived in poor conditions and were subjected to bad education, poor jobs, and discrimination, white people lived very privileged lifestyles.

## Resource 2



Naisiusora/Shutterstock

The effects of inequality were visible throughout South Africa, and throughout the rest of the world. Apartheid ensured that white people were granted privileges, while people of colour suffered from extreme inequalities. As a result of years of oppression, poor education and lack of social capital are still a huge obstacle in South Africa. Learners are still receiving bad education, people are still living in dire conditions, people in positions of power are generally white, and due to poor education, many black people battle to find employment. In most parts of South Africa, the discrepancy between the rich and the poor, is huge.

## Resource 3



Mark Cinotti/Shutterstock

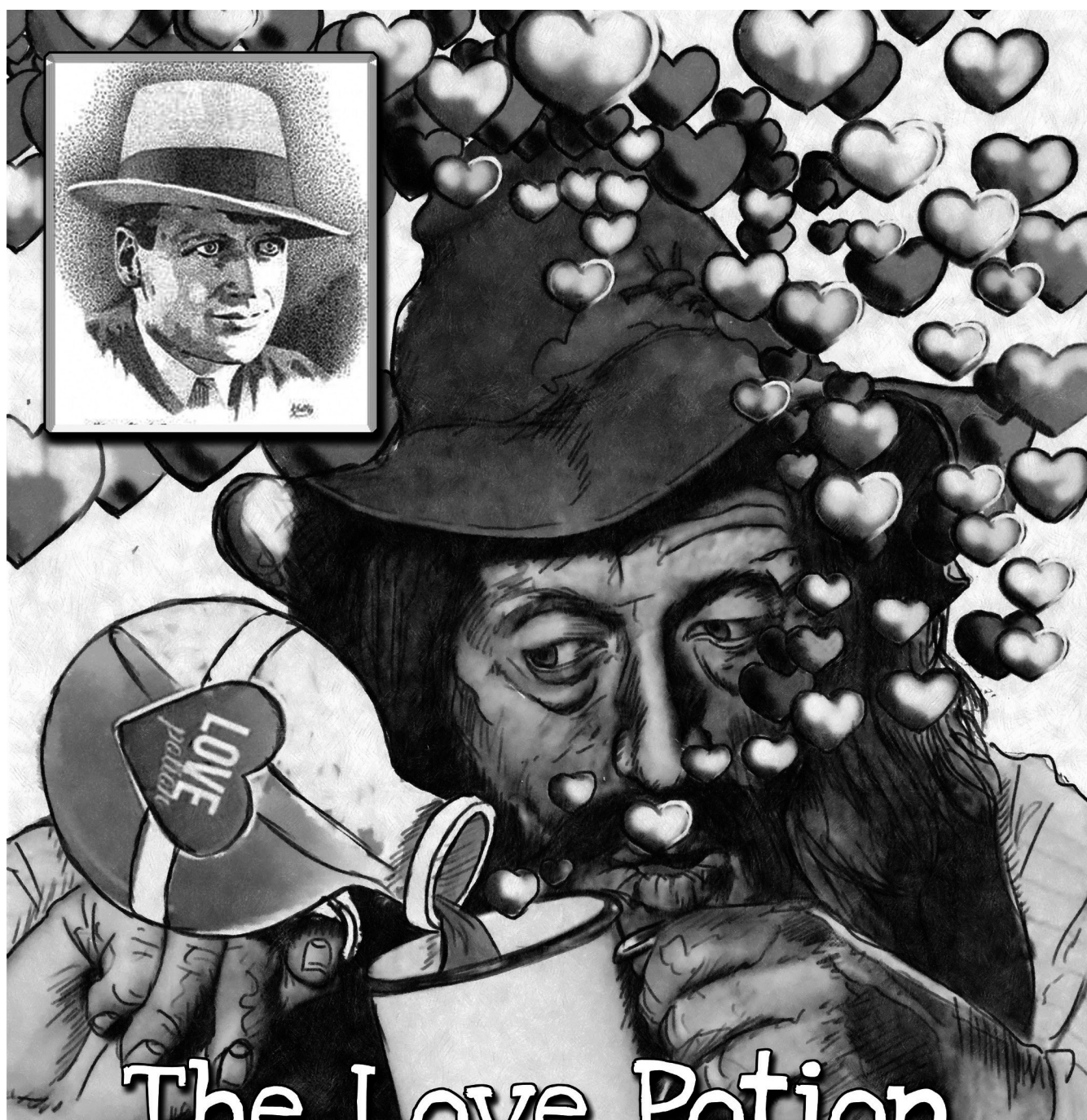
People who have been oppressed, and have suffered from the effects of inequality, sometimes feel like there is no hope left. People may blame themselves for not being 'further' in life, and may see themselves as a 'failure,' rather than as the victims of an extremely unfair and unequal society. In 'Gemini', the main character believes that he has wasted his academic potential, and that is the reason why he is poor and unable to get a better job. The reader gets the sense that the main character blames himself entirely, instead of recognising that most of his 'failures' are a result of a system that purposefully worked against him.

## Resource 4



Lucky Business/Shutterstock

Many parents put a lot of pressure on their children to succeed. Parents may expect their children to be successful in the same way that they were, or some parents may want their children to succeed in ways that they never could. When adults put too much pressure on children, it might cause them to fail. Some children find it hard to cope with so much pressure and end up rebelling against their parents or against authority in general. Other children find the pressure too much and they resort to self-harming or even suicide.



# The Love Potion

Herman Charles Bosman

3 February 1905 – 14 October 1951

*You mention the juba-plant (Oom Schalk Lourens said). Oh, yes, everybody in the Marico knows about the juba-plant. It grows high up on the krantzies, and they say you must pick off one of its little red berries at midnight, under the full moon. Then, if you are a young man, and you are anxious for a girl to fall in love with you, all you have to do is squeeze the juice of the juba-berry into her coffee.*

**Oom Schalk**

**Lourens**

---

**Gideon van  
der Merwe**

**Lettie**

---

**Krisjan**  
**Corrier**



**Groot**

**Marico**

---

**Transvaal**

**North West**

**Province**

---

**Folklores**

**Jeepwood**

**music!**

**farminis  
community**

---

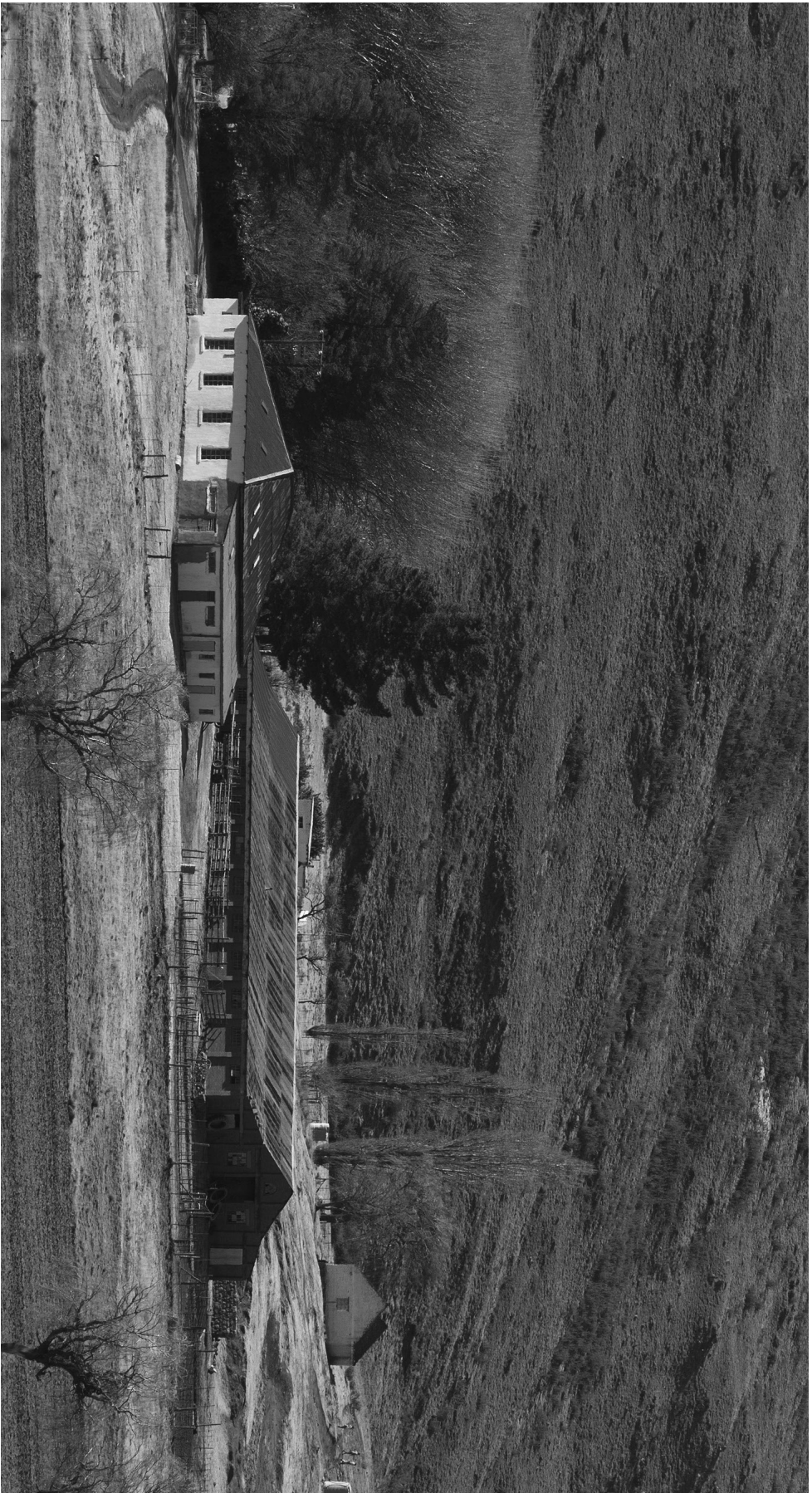
**Deception  
and Hypocrisy**

**irony!**

---

**Love and  
Courtship**

# Resource 5



Rob Crandall/Shutterstock

The short story, 'The Love Potion', is set in Groot Marico, in the Northwest Province (this used to be part of what was known as the Transvaal). During the time the novel was set, Groot Marico was known as a farming community (and to a large extent it still is). They were Afrikaans farmers who believed in Afrikaans traditions and folklore.

## Resource 6



Joanna Tkaczuk/Shutterstock

In South Africa, and in many parts of the world, plants are cherished and seen as an important resource to remedy illness/injury, but also, to implement curses, potions, and wishes (things we hope for). Many people, from different cultures, believe plants have these magical powers, while other people question these powers. Some people believe that plants don't actually do anything, but because the people believe the potions have powers, these things will actually happen (power of the mind/playing tricks on the mind).

## Resource 7

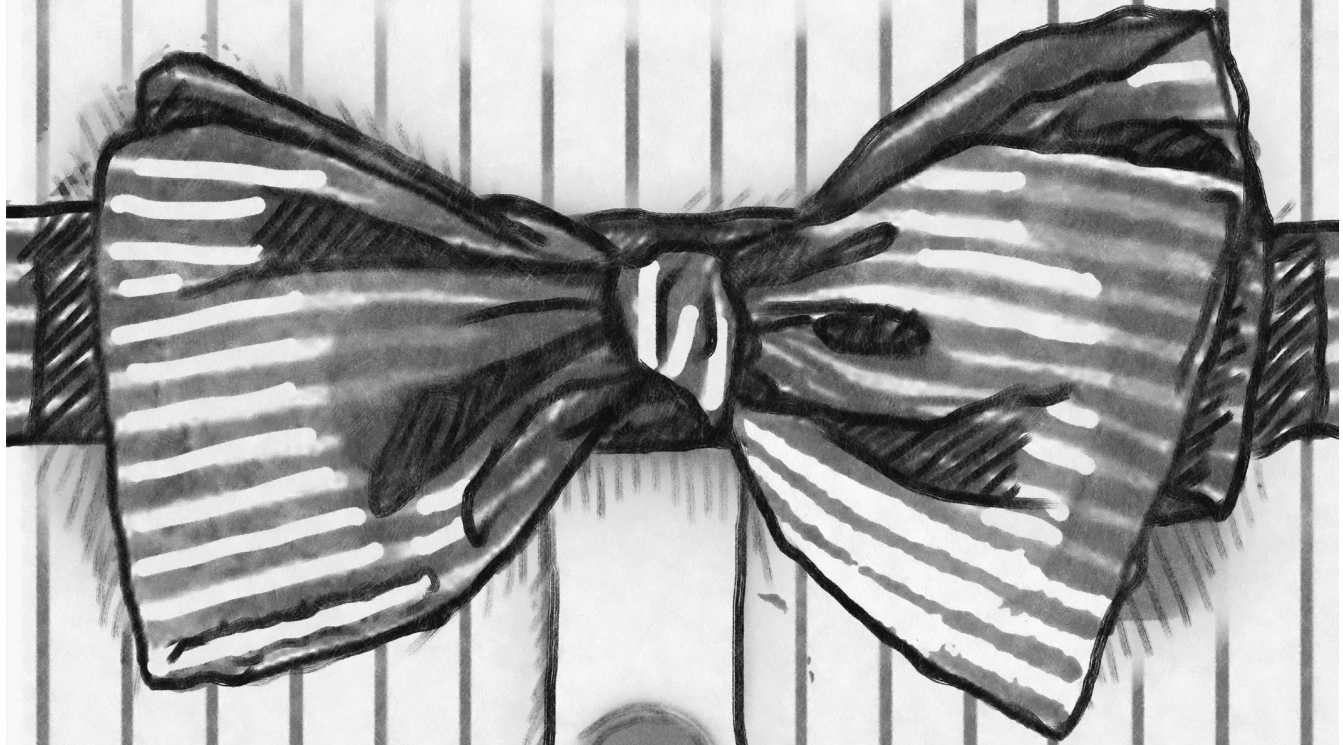


nuvolanexita/Shutterstock

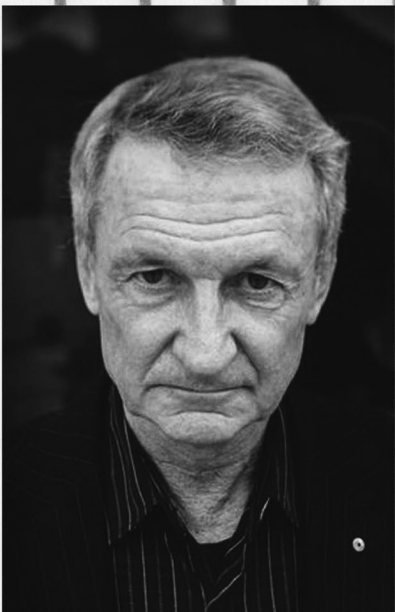
The image above represents deception. Deception is when people are hiding the truth, or hiding their true feelings. Deception can also be when people purposefully lie and trick other people for their own gain.



# Pink Bow Tie



Paul Jennings



Well, here I am again,  
sitting outside the Principal's  
office. And I've only been at  
the school for two days.  
Two lots of trouble in two  
days! Yesterday I got the  
strap for nothing.

**Nothing at all.**

# The Narrator (The boy)

---

# The Principal

**Miss**

**Newham**

---

**bow tie**

**story within  
a story**

---

**Sarcasm**

**Rebellion**

**Irony**

---

# Ausstralia

---

# colonisation

**What is  
the truth?**

---

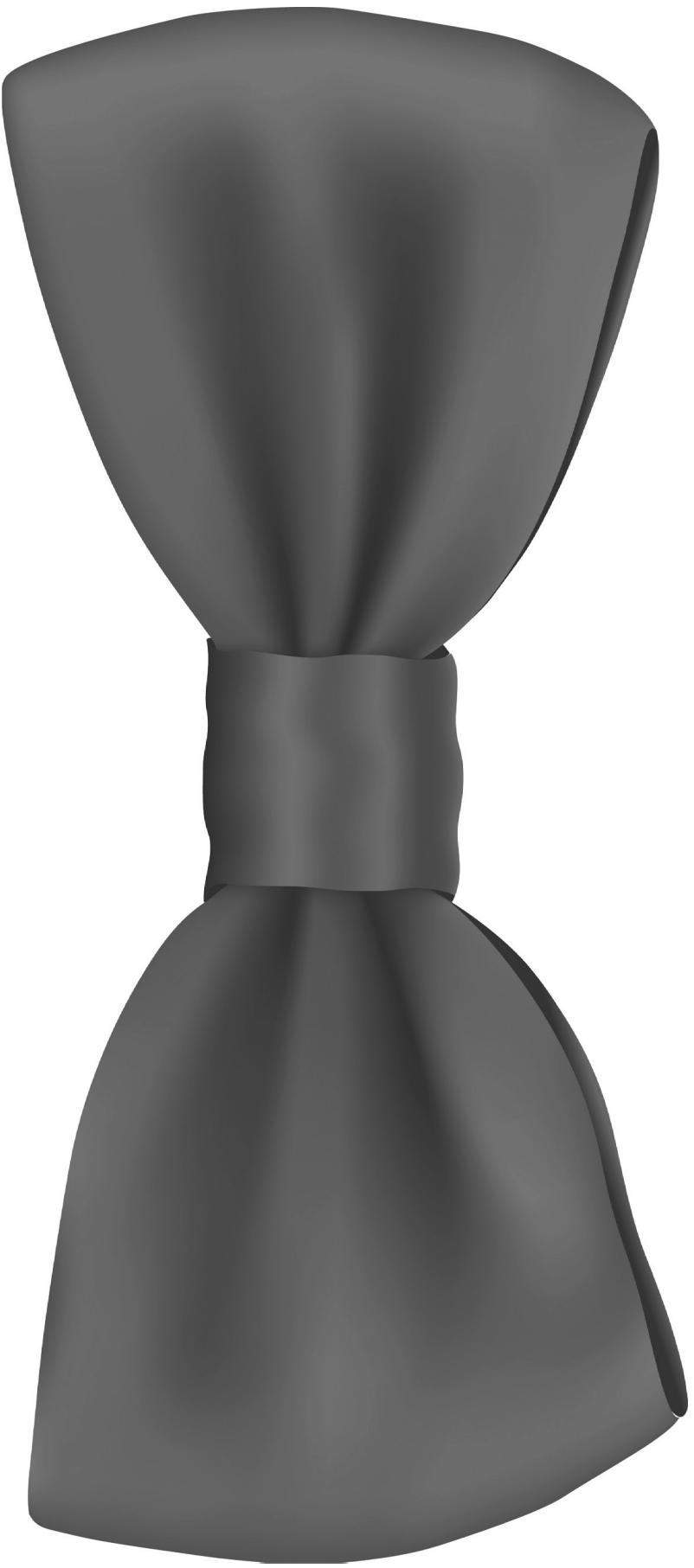
**As  
e**

**Secrecy**

**Authenticity**



## Resource 8



Harlow Butler/Shutterstock

'Pink Bow Tie' is set in Australia at a time where patriarchal systems were firmly in place. A man's role was to be 'manly', 'tough' and 'unemotional'. If a man wore pink, he was seen as 'feminine' or 'weak'. Luckily, in most cultures, colours are no longer seen as gender specific.

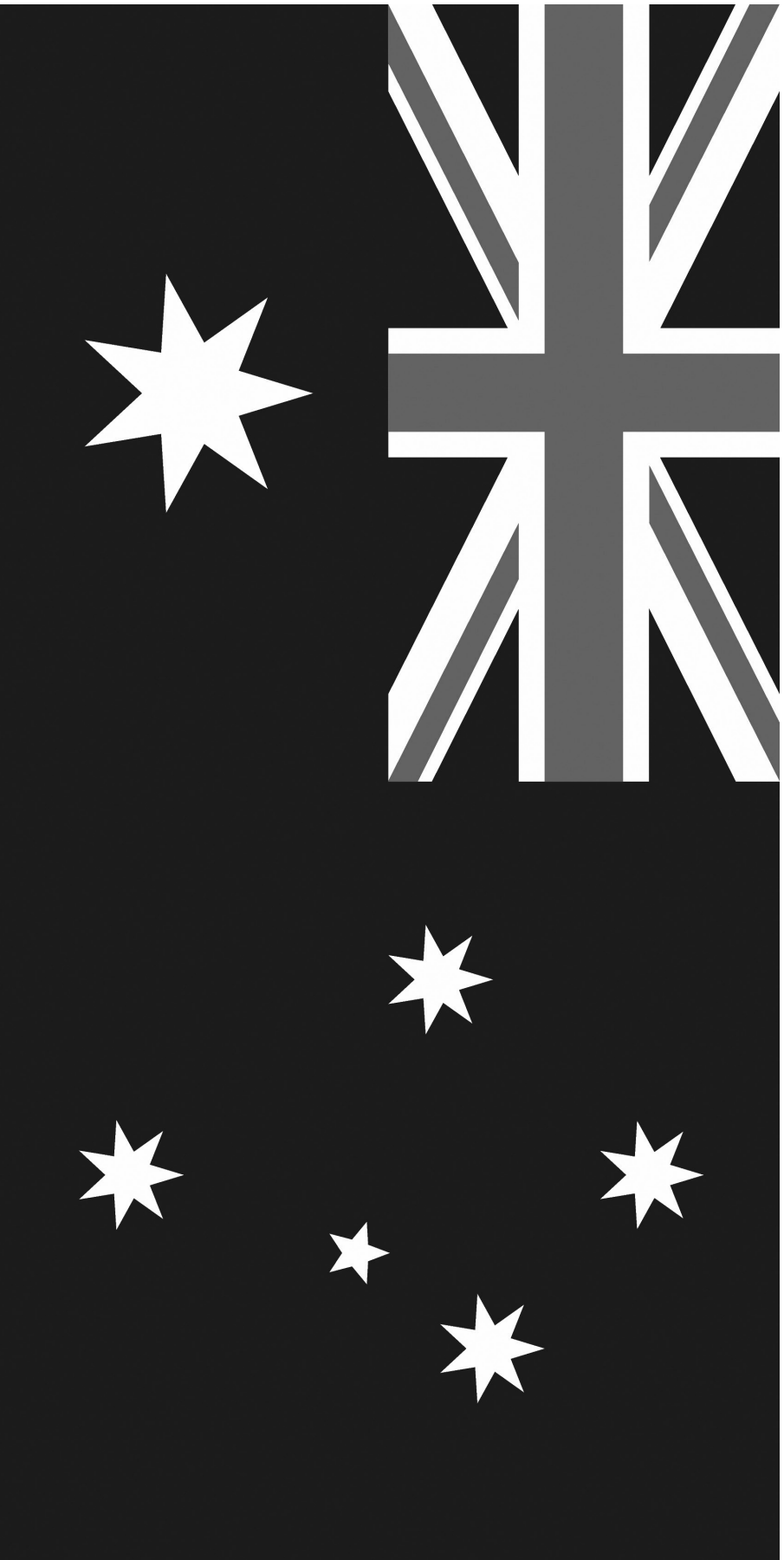
## Resource 9



Creatista/Shutterstock

A rebellious teenager is a teenager who does not listen to authority (the people in charge), and purposefully does something to show that they don't care about authority. Sometimes teenagers are rebellious just because they think it is 'cool,' or because they want to fit in with what their friends are doing. Other teenagers are rebellious because they genuinely don't like the rules and ideals of the people in charge – so they rebel against them.

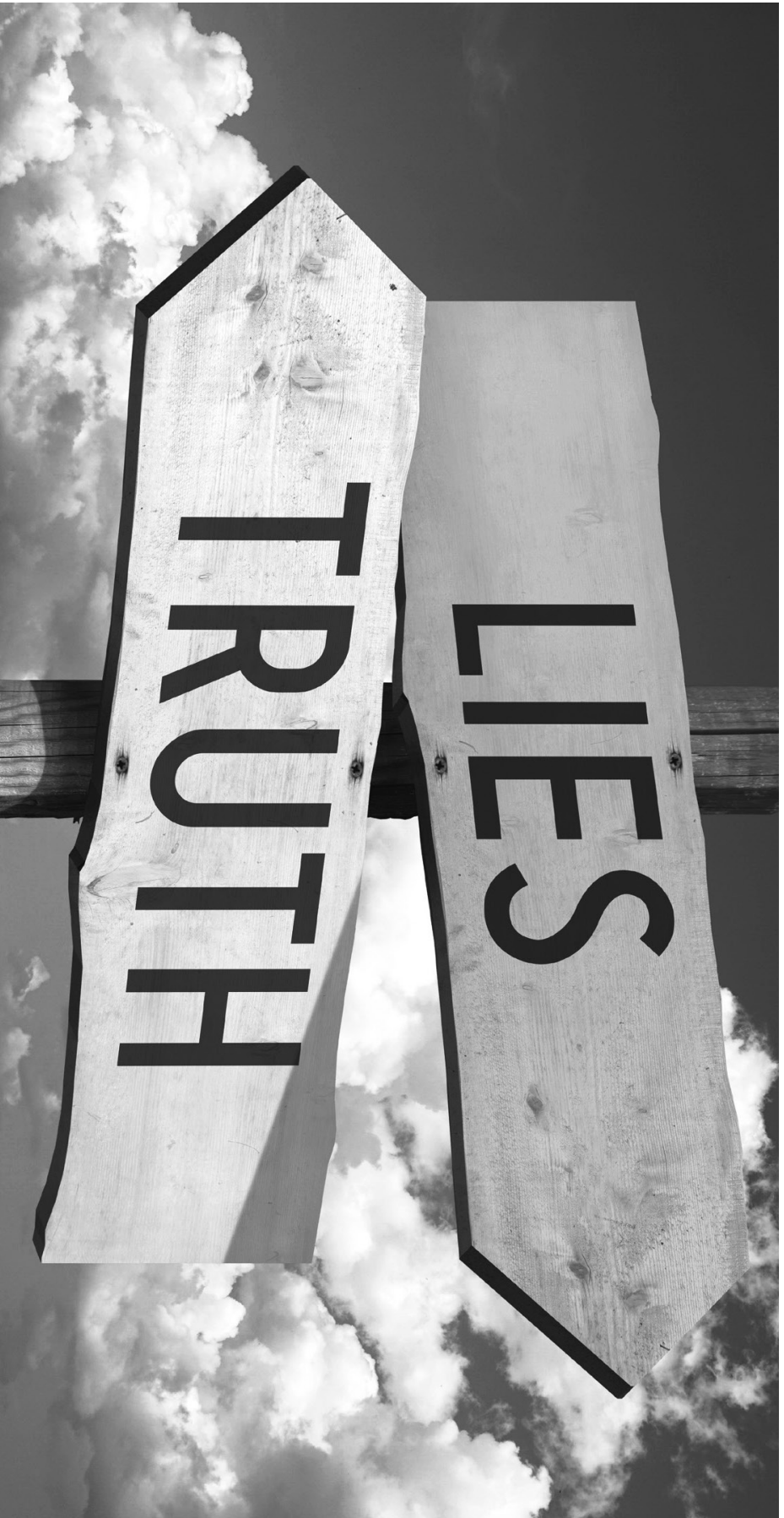
## Resource 10



Maximumvector/Shutterstock

'Pink Bow Tie' is set in Australia. Australia is a country/continent which lies across the Indian Ocean from South Africa. The Australian flag has the British flag placed within it (top left corner), which indicates that it was also colonised by the British (like South Africa). The British settlers killed most of the indigenous people in Australia, which means that most of the Australian population is white.

# Resource 11



3D\_Creation/Shutterstock

In life, we are often left asking the question “What is the truth?” Truth can be a very difficult concept to understand, and sometimes there is no set truth. For example, one person may believe in Christianity, but another person believes in Islam. Both of these people believe that their religion is the truth. Neither one of them is wrong nor right – they just believe in their own truth. In life, it is often left up to human beings to individually decide what is true for them.

# SCARED

# ANTHONY HOROWITZ



NOBODY LAUGHED AT GARY WILSON. NOT AT HIS NAME, NOT AT HIS PLACE IN CLASS (ALWAYS LAST), NOT AT THE ACNE WHICH HAD RECENTLY EXPLODED ACROSS HIS FACE. GENERALLY PEOPLE AVOIDED HIM, WHICH SUITED GARY FINE. HE ACTUALLY ENJOYED HURTING OTHER KIDS, TAKING THEIR LUNCH-MONEY OR RIPPING PAGES OUT OF THEIR BOOKS.

BUT SCARING THEM WAS JUST AS MUCH FUN.

**Gary**

**Wilson**

---

**Gary's  
mother**

**Justice**

**punishment**

**appropriate**

**fair**



**Ujini!**

**Yini!**

**parallel**

**countryside**

**English**

**London**

**insecure.**

**successes**

**Mother**  
**Nature**

---

**powerful**

**respectful**

---

**Respect**

**for Nature**

**parallel**

**countryside**

## Resource 12



Chodyra Mike/Shutterstock

Justice is when punishment is given to people who have done something wrong. The above picture, shows Lady Justice. She wears a blindfold, which symbolises that justice should be blind. This means that justice should not be influenced by prejudice, bias or discrimination. Rather, it should be fair and equal.



# Resource 13



Roger Ashford/Shutterstock

The short story, 'Scared', is set in the countryside in England. It is set in a place called Sussex, which is not far from London. In the countryside there are forests of trees, vast (big) landscapes and many hills.

## Resource 14



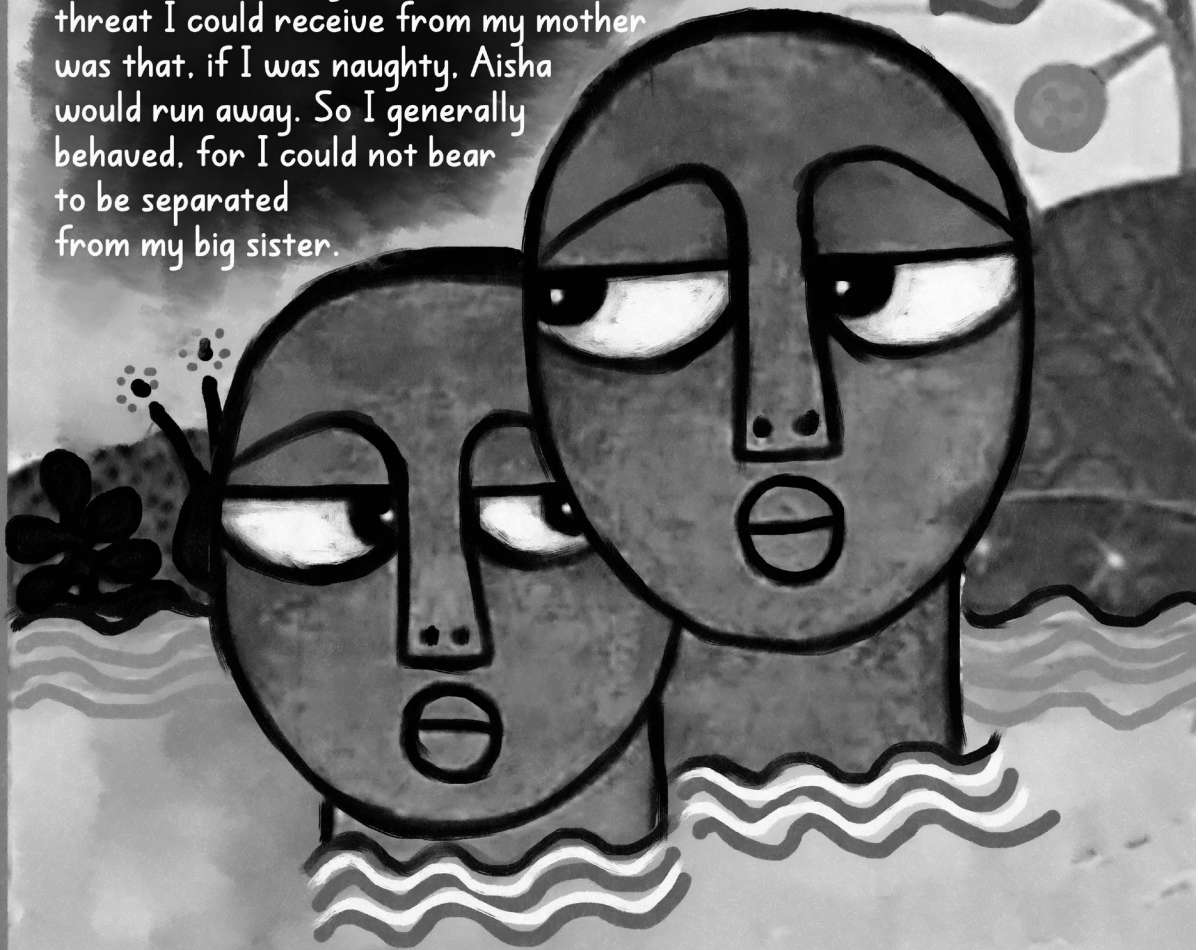
Jaqueline F Cooper/Shutterstock

The above image was taken after a hurricane (a very big storm) hit a town. This shows us the power and strength of Mother Nature. It also indicates that we need to have respect for nature, because it is much more powerful than human beings.



# Timwa Lipenga

From the time I could talk, I tried to talk like Aisha. And when I could finally walk, I followed her everywhere. The most ominous threat I could receive from my mother was that, if I was naughty, Aisha would run away. So I generally behaved, for I could not bear to be separated from my big sister.



## SWIMMING PARTNERS

**A  
i  
s  
r  
e**

**l  
i  
n  
d  
e**

**Itinun**

**Motrner**

**Afrikaans**

**Majama**

**Lake**

**Maijawi**

---

**developed**

**undeveloped**

**poverty**



**education**

**stigma**

**!iE**

**Sneezy**

**family**

**sisterly**

**love**

**Follow**

**admire**

**city life**

---

**Poverty (the  
poverty trap)**

# The Impact of HIV/AIDS

---

# Hope through Love

# impressionabile

---

## Resource 15

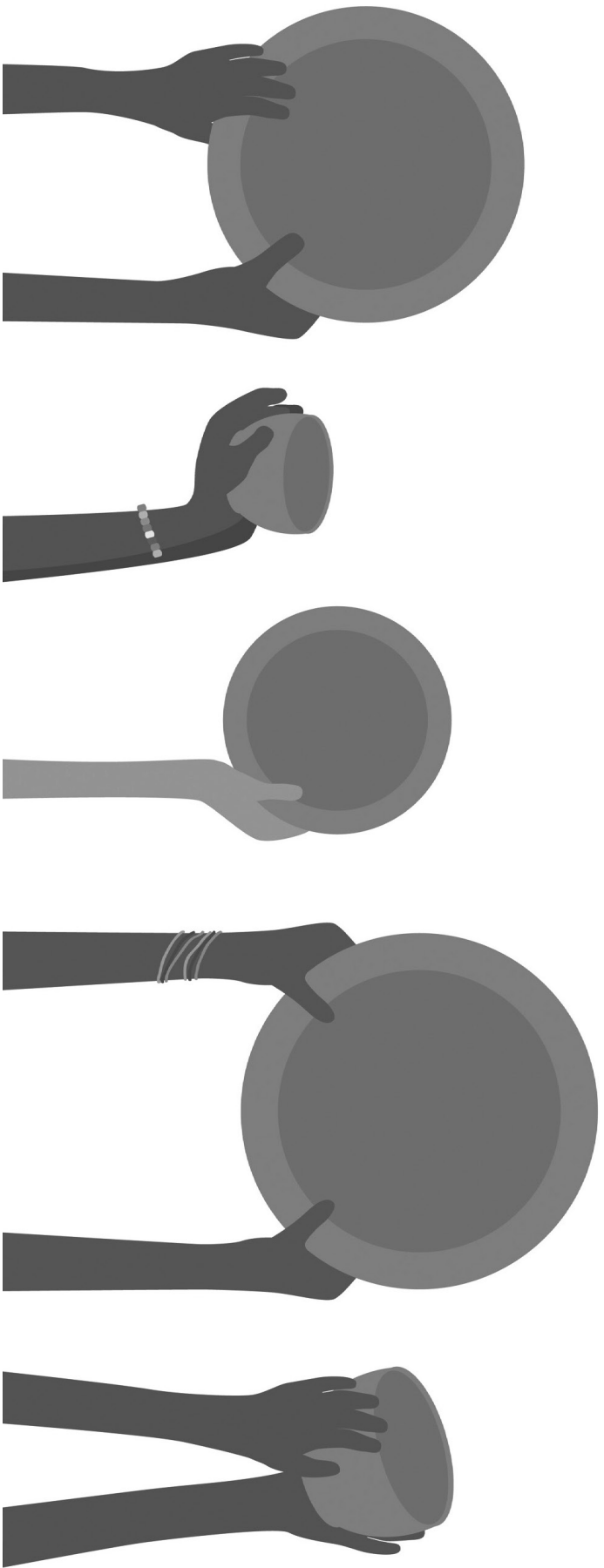


Miker/Shutterstock

In Africa, and all over the world, there is still a stigma (shame) associated with HIV. People feel ashamed of their status, so instead of telling people, or asking for help, they keep it hidden. This puts them at risk of living an unhealthy life, and possibly even dying. When people are too ashamed to disclose their status to sexual partners, it puts their partners at risk of being infected. One of the reasons that there is still a stigma about HIV and Aids is because many people believe it is a deadly virus, and you have no hope of living a healthy and long life. This is untrue. People who are infected with HIV or Aids can live long and healthy lives if they take care of their bodies.



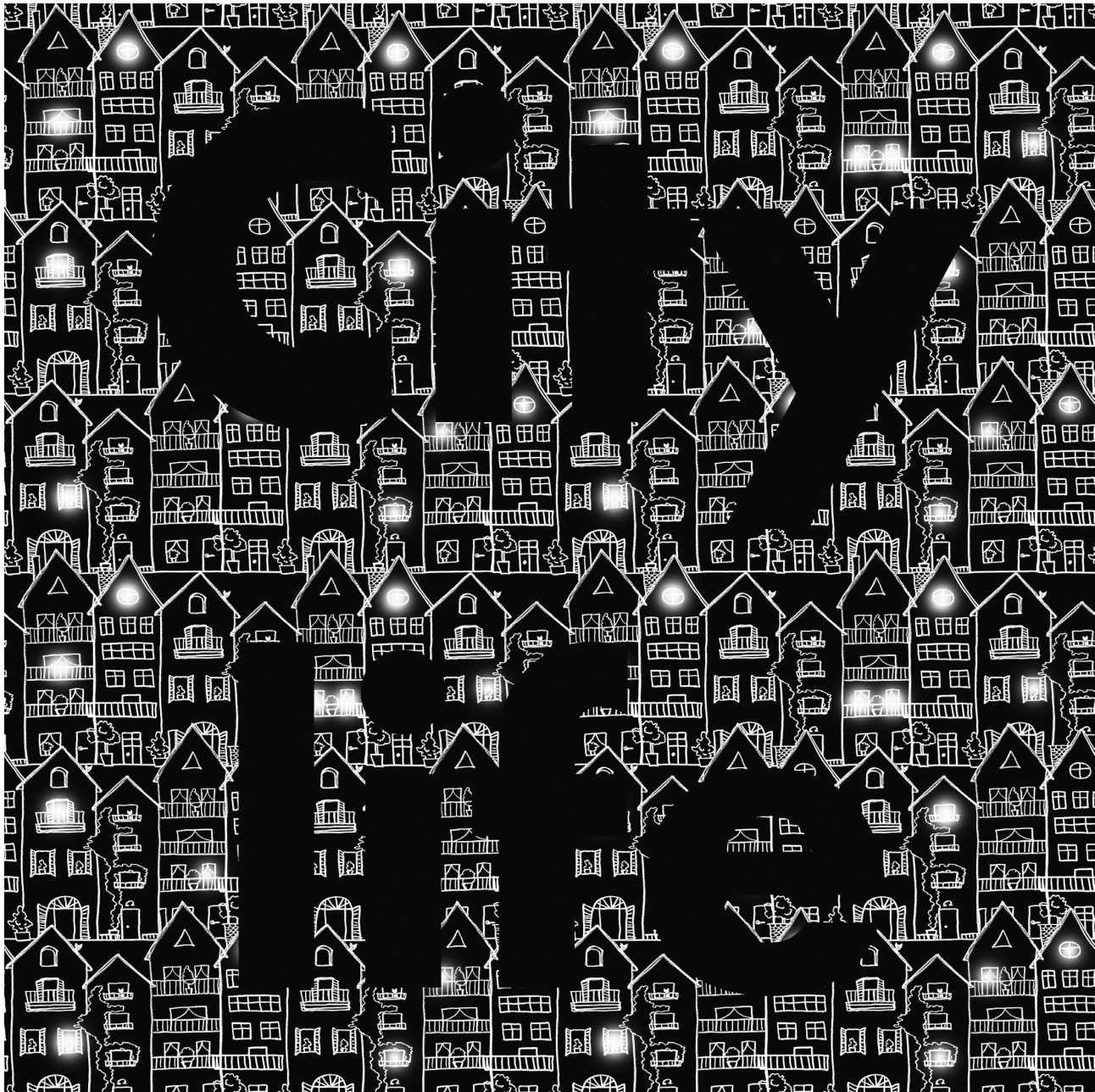
# Resource 16



Pixsooz/Shutterstock

People who are living in poverty are less likely to receive a good education, and therefore, are less likely to have 'social capital' and are less likely to find good employment. When people are living in dire poverty (extreme poverty), and they have very few options, some of them resort to crime to feed themselves and their families. Some people turn to alcohol and drug abuse to 'numb the pain' of their circumstances. Sometimes, when a family is very poor, they may be unable to send their children to school. Therefore, the cycle of poverty is likely to be passed down to the next generation.

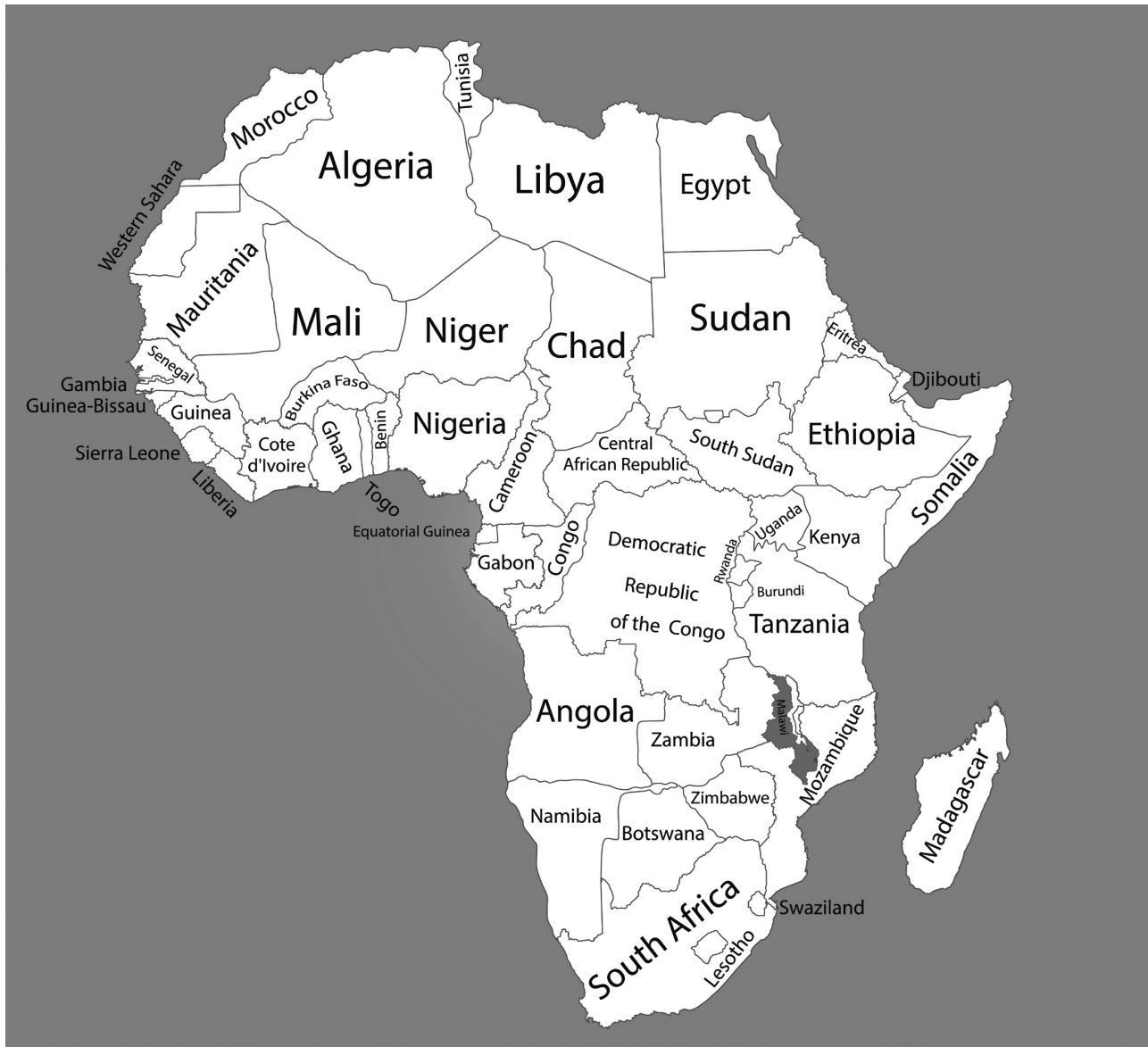
# Resource 17



Svetlana Iri/Shutterstock

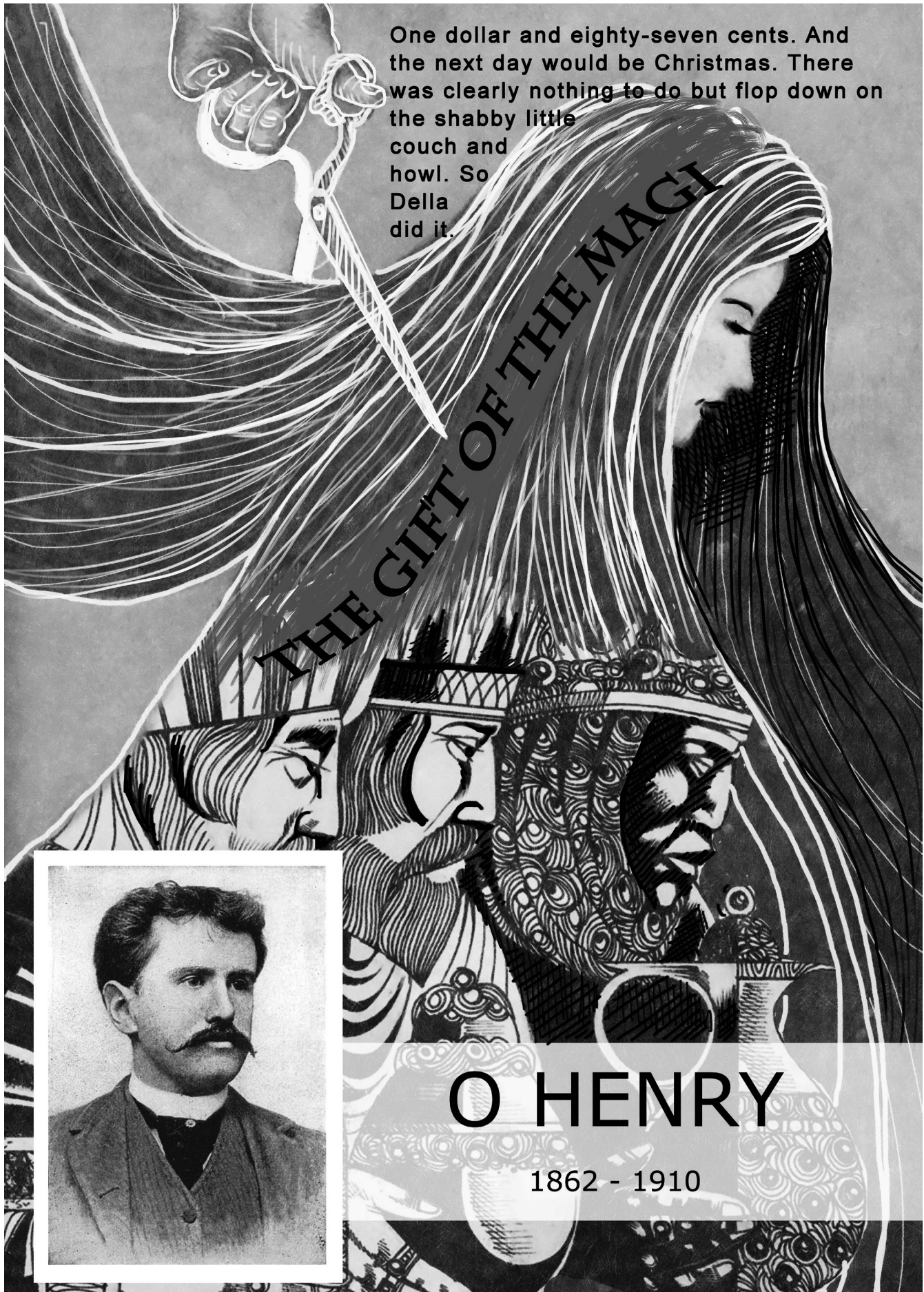
City life has many pull factors which draw people to it. In big cities, there is more opportunity for employment, more opportunity for quality education and more opportunity for self-growth. Many people move to cities in hope of a better, brighter future.

# Resource 18



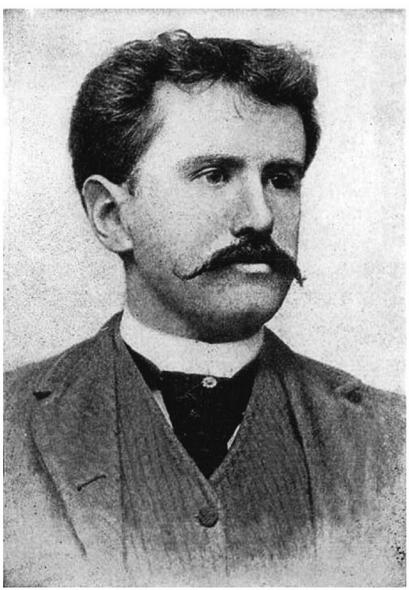
dovla982/ Shutterstock

'Swimming Partners' is set in Malawi. Malawi is an African country that is landlocked between Mozambique, Tanzania, Zambia and Zimbabwe. The largest city in Malawi is called Lilongwe, and this is the country's capital. Lake Malawi takes up approximately one third of the country. Malawi is one of the least developed countries in Africa.



One dollar and eighty-seven cents. And the next day would be Christmas. There was clearly nothing to do but flop down on the shabby little couch and howl. So Della did it.

# THE GIFT OF THE MAGI



## O HENRY

1862 - 1910

**Wini!**

**D  
e  
r  
r**

**Madame  
Sofronie**

---

**patriarchy**

**Wearaltn**

---

**New York  
City**

# America

---

## Material Wealth and Social Standing



**housesewife**

**bonidin**

**rip  
oil  
tar**

**Love and  
sacrifice**

# **Marriage Conventions**

---

## Resource 19



Everett Historical/Shutterstock

The short story, 'The Gift of the Magi', is set in 1905 in New York City, USA. During this period, New York was the capital of communications in America. It was also the commercial and financial capital of the country. This means that there was a lot happening in the city, monetary wealth was important and many 'high profile' people lived in the city. New York City is still the capital of many of these aspects, and the city is still held high regard.

## Resource 20



Studiostoks/Shutterstock

In the early 1900s in New York City, patriarchal systems were firmly entrenched. Women were given the roles of wife, homemaker and mother. It was common for women to be referred to as their husband's property. Men were also expected to think and act in certain ways. Whilst many of these stereotypes are not as blatant in America these days, they are still, however, present.

# Resource 21



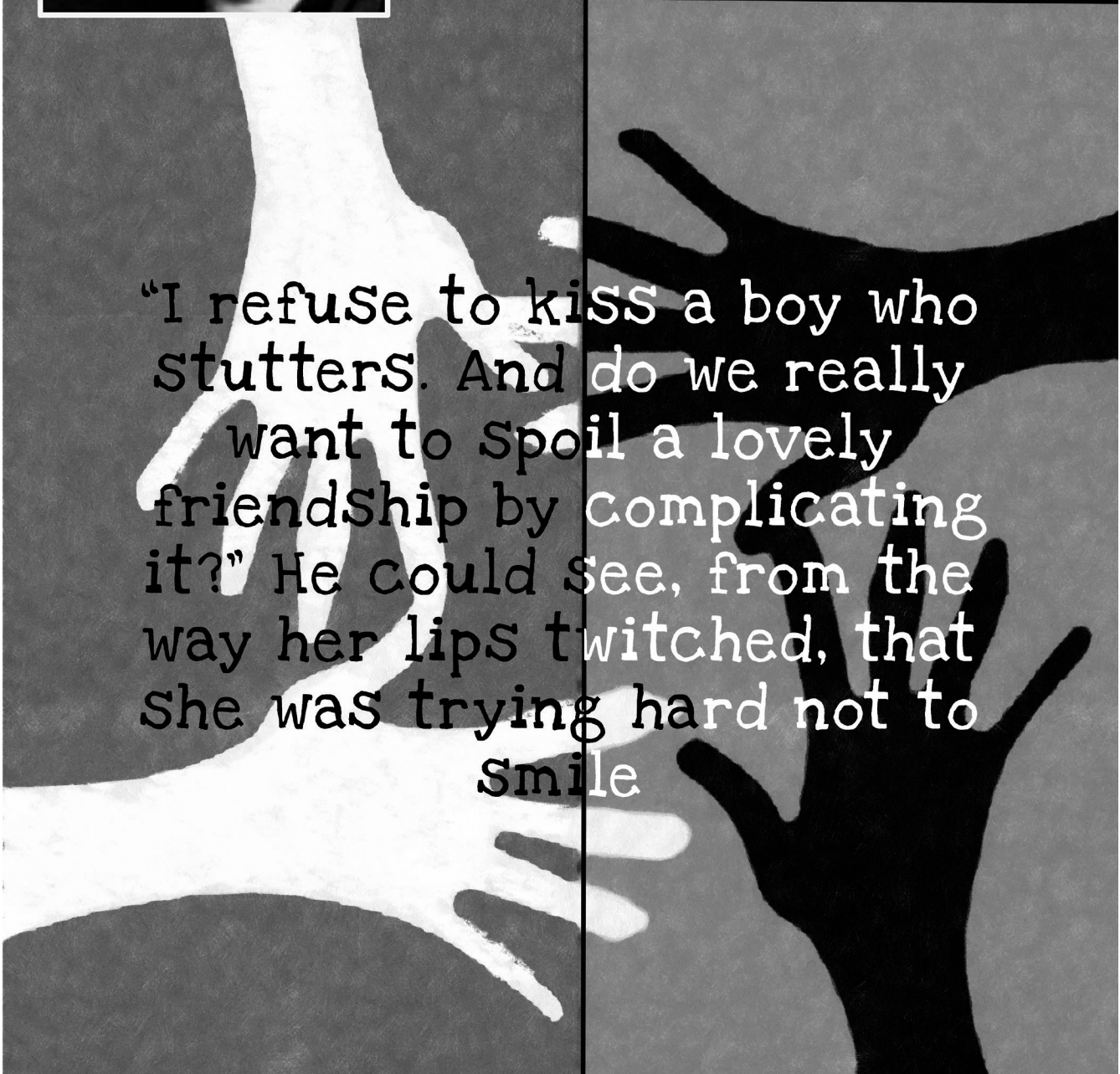
givga/Shutterstock

Having a lot of money is seen as very important in our society. Many people treasure their financial wealth more than anything else in the world. In 'The Gift of the Magi', the two main characters find happiness in sacrificing each of their most valuable belongings, to make each other happy. Their love for each other brings them more joy than their material items.



# The Journey

Barrie Hough  
1953 - 2004

A large graphic of two hands, one white and one black, reaching towards each other. The white hand is on the left, and the black hand is on the right. They are positioned as if about to clasp or support each other. The background is a dark grey color.

“I refuse to kiss a boy who  
stutters. And do we really  
want to spoil a lovely  
friendship by complicating  
it?” He could see, from the  
way her lips twitched, that  
she was trying hard not to  
smile

**John**

**Thembu.**



**segregasi**

**separasi**

**includ**

**unity**

# Feelings Like an Outsider in the Great

---

**different**

---

**speech**

**stammer**

**determination**

**obstacles**

**democracy**

---

**Overcoming  
challenges**

## Resource 22



Daisy Daisy/Shutterstock

Often people exclude other people from their groups. When someone is excluded, they feel alone and like an outsider. In 'The Journey', the South African government has just made all schools open to all races. Thembi feels like an outsider because she is one of the few black children in a previously white-only school. Johan feels excluded because he stutters.

## Resource 23

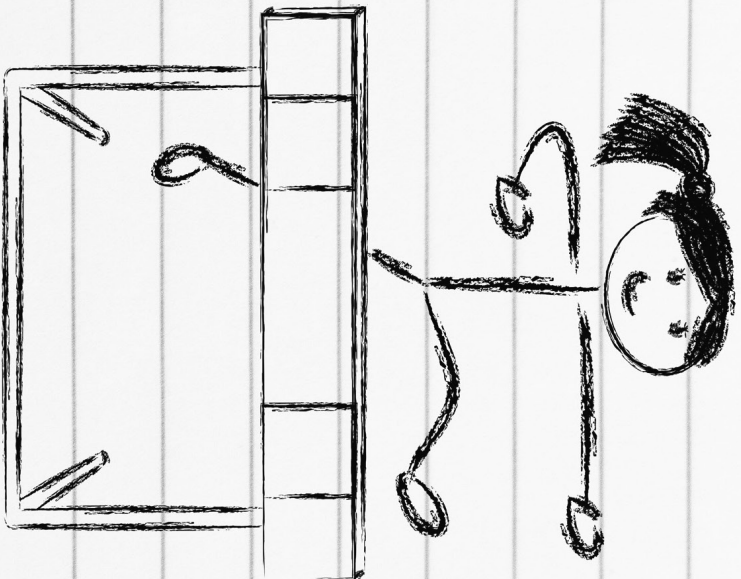


Sophia Cole/Shutterstock

During Apartheid, people of colour were segregated (separated) from white people. 'The Journey' is set in the period of transition from the Apartheid government to the democratic government.



## Resource 24



# OVERCOME THE OBSTACLES

Jamroen Jamain/Shutterstock

'The Journey' shows us that with persistence, and with the help of others, people can overcome challenges. The main characters both have challenges to overcome, but together they feel more secure, and therefore feel safer attempting to face their obstacles.



1939 - 1995

So, as far as everyone's concerned, I'm the fastest. Except for Gretchen, who has put out the story that she is going to win the first-place medal this year. Ridiculous. No one can beat me, and that's all there is to that.



# Raymond's Run

Toni Cade Bambara

# Squeaky

(real name is Hazel)

Elizabeth Deborah Parker)

---

Raymond  
Parker

# Gretchen B. Lewis

---

**cognitively  
impaired**

# Competitiveness

---

# New York City

**American**

**Farlem**

**kindness**

**selfies**

**Selfish**

**ambitious**



**determined**

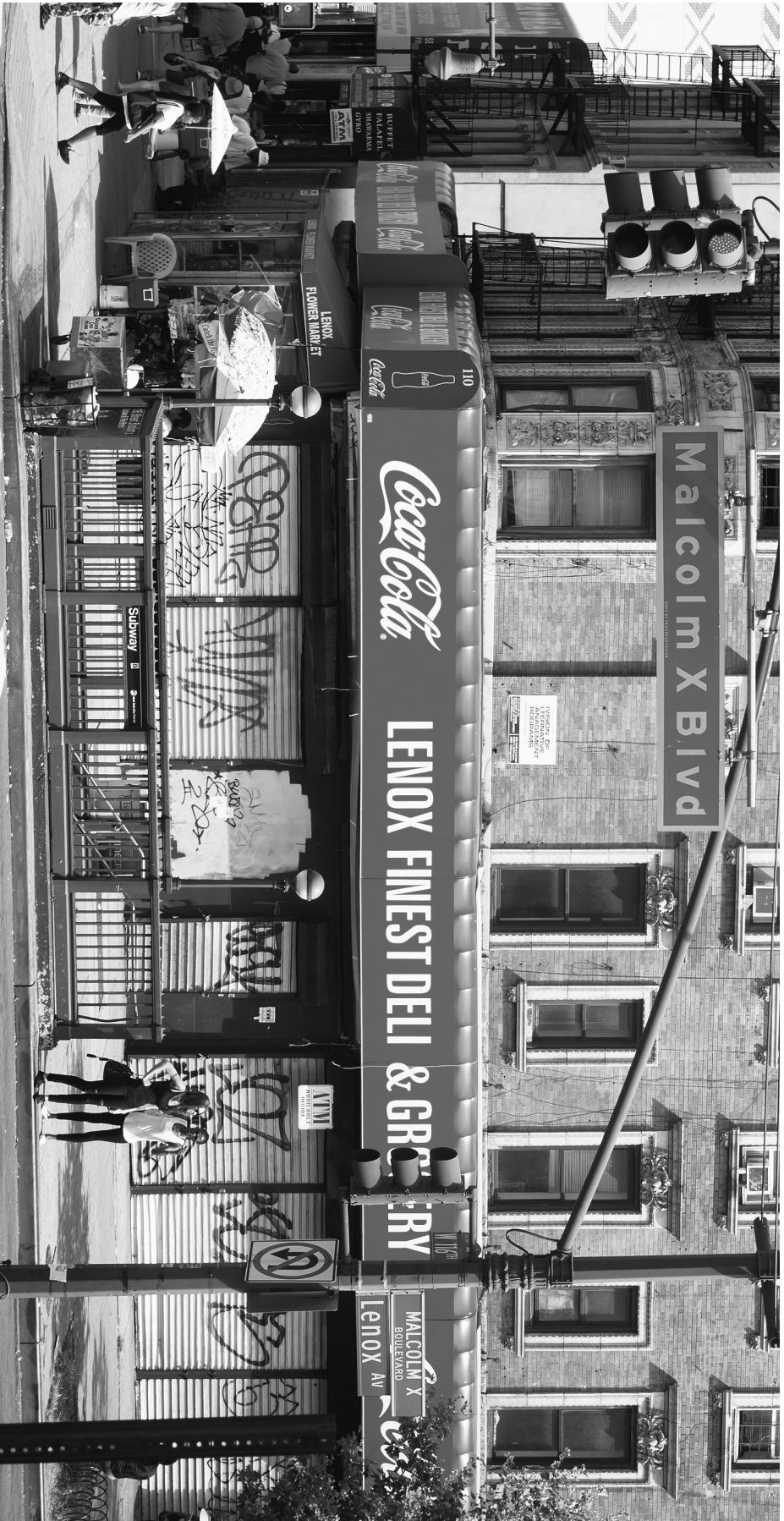
---

**Caring for**

**Others Can**

**Make Us Kinder**

# Resource 25



Kamira/Shutterstock

The short story, 'Raymond's Run' is set in Harlem, New York City in America. In the past, Harlem was a mostly African American (black) suburb. It also used to house people of a poorer socio-economic background.

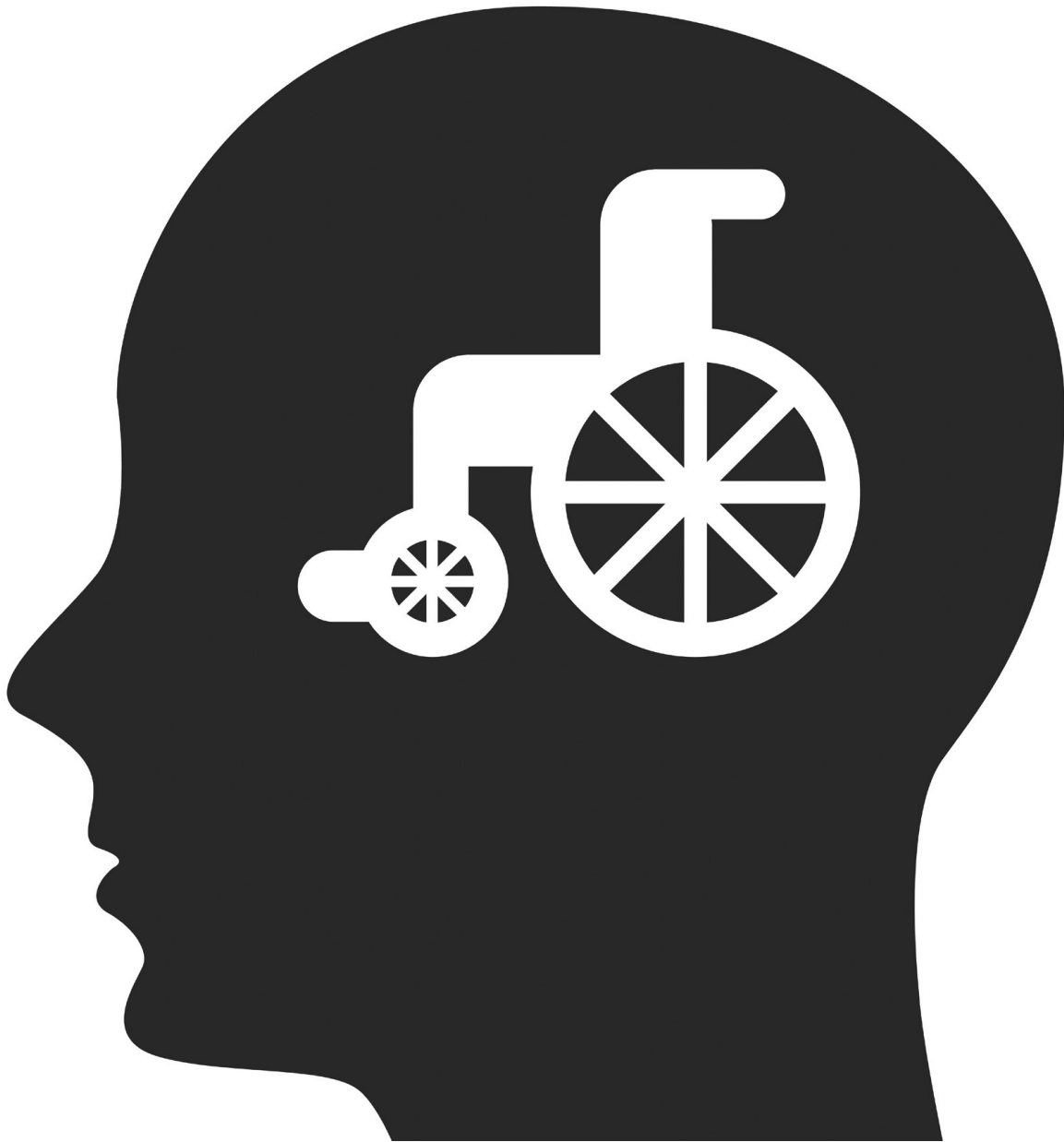
## Resource 26



ShutterstockStudio/Shutterstock

Being competitive can encourage people to train and work harder to be the best at something. It is a good thing to be driven and ambitious. However, some people become so consumed by being the best that they forget about those around them, and only focus on themselves.

## Resource 27



nuwatphoto/Shutterstock

In 'Raymond's Run', Raymond is cognitively impaired. This means that he has a disability in his brain. Squeaky is aware of her brother, Raymond's, difficulties, but does not make fun of him. She shows him love and respect and always looks after his safety. Society, however, is often not accommodating of mentally disabled people and they are treated unfairly simply because they are different.